



# IntelliTrack

Collect. Track. Manage.

## WMS

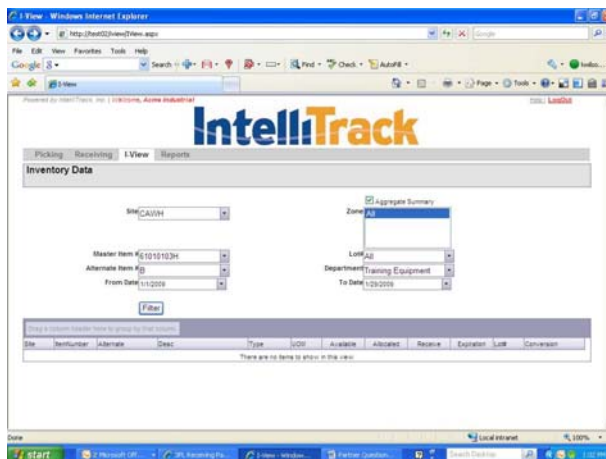
### Overview

The **IntelliTrack WMS software** is a reliable, affordable, and easy-to-use warehouse management solution available in both batch and real-time radio frequency (RF) versions. Benefits of the IntelliTrack WMS system include improved inventory accuracy, increased labor productivity, and better customer service.

IntelliTrack WMS includes advanced warehouse management capabilities, including sequenced picking and put-away, cubing, wave management, and cross docking.

IntelliTrack WMS was designed with scalability in mind. Microsoft® SQL Express support means that you can comfortably handle hundreds of users and tens of thousands of SKU's with excellent response time. IntelliTrack WMS was developed with the latest Microsoft® development tools, assuring compatibility with most any system. By combining IntelliTrack WMS with an RF terminal, you create a complete low-cost, real-time warehouse management system.

With hundreds of IntelliTrack installations world wide, you can be assured of solid performance and reliability. IntelliTrack WMS is an ideal solution for warehouse operations in manufacturing, distribution, retail, government, and healthcare.



### Program Requirements

#### Processor

- 1 GHz Minimum
- 1.8 GHz recommended

#### RAM

- 256 MB minimum
- 512 MB or greater recommended

#### Available Hard Disk

- Server
  - 300 MB
- Processor
  - 500 MB

#### Operating System

- Windows XP Professional SP2, Windows 2003 Server SP1, Windows Vista Home Premium, Vista Business, Vista Enterprise, Vista Ultimate, or Server 2008

#### Network Card

- Active network connection

#### Additional Requirements for the Batch Portable Component

- Internet Information Services (IIS) must be installed and operational
- Microsoft ActiveSync (with Windows XP or 2003 Server Operating Systems) version 3.8 or higher, or Mobile Device Center on Windows Vista or Windows Server 2008

**IntelliTrack** Warehouse Management Solution

*Platinum Elite Partner*

Pointe View Professional Park  
 4833 Darrow Road Suite 100  
 Stow, OH 44224  
 P. 330-528-0448  
 F. 330-650-0172  
 sales@dowlinggroup.com  
 www.dcquest.com





# WMS

## Available in 3 Versions:

### ISRP

- Paperless Receiving
- Serial Numbers
- Multiple UOM & Let Downs
- Inquiries
- Move/Transfers
- Physical Inventory
- Cycle Counting
- Kitting

### WMS RF Standard

(includes Standard Batch features)

- Terminal Messaging
- RF Portable Application

### WMS RF Professional

(includes Standard Batch & RF features)

- Sequenced Pick & Put Away
- Pallet Tracking
- Basic Cubing
- Replenishment
- Zone Picking

### Barcode Printing:

Integrated barcode printing allows you to label your inventory and locations quickly and easily based on the data contained in your IntelliTrack application. Portable data terminal support and barcode labels maximize data accuracy and efficiency when collecting inventory information.

### Easy to Use:

IntelliTrack is a user-friendly Windows application. Easy menu navigation allows you to quickly perform common inventory tasks. Because it is a Windows® application, IntelliTrack's user interface will be familiar to anyone who is accustomed to working in this environment.

**IntelliTrack WMS** speaks the language of the user. At its fundamental core, WMS contains a multilevel data dictionary to display all text on forms and reports. This feature allows a user to configure any text in forms, PDA/PDT prompts, queries, reports and error messages to conform to their in-house terminology.

IntelliTrack WMS/ISRP-Matrix Feature/Product	ISRP	WMS RF Standard	WMS RF Professional
Batch portable data collection terminal Application	•	•	•
Cycle Counting	•	•	•
Inquiries	•	•	•
Inventory Moves & Transfers	•	•	•
Multiple Units of Measure	•	•	•
Paperless Picking & Receiving	•	•	•
Physical Inventory	•	•	•
SQL Server Capable	•	•	•
Serial Numbers	•	•	•
Source Code (Optional)	•	•	•
Supports Plug0Ins through WIA	•	•	•
Integrates with QuickBooks	•	•	•
Staging		•	•
Portable data collection terminal Bar Code printing		•	•
Terminal Messaging		•	•
RF (WiFi) portable data collection terminal application		•	•
Cross Docking			•
Cubing (Space Management)			•
Sequenced Pick & Put away			•
Kitting	•	•	•
Pallet Tracking		•	•
Replenishment			•
Wave Picking (Batched Orders)			•
Zone Picking			•

**IntelliTrack** Warehouse Management Solution

Platinum Elite Partner

Pointe View Professional Park  
4833 Darrow Road Suite 100  
Stow, OH 44224  
P. 330-528-0448  
F. 330-650-0172  
sales@dowlinggroup.com  
www.dcquest.com



**Quest**  
Integrated Solutions  
A Division of Dowling Consulting Group



## WMS

**Quest Integrated Solutions**, a division of Dowling Consulting Group, specializes in Wireless Networks and Automated Data Collection Systems.

Since 1991, Quest has provided integration skills and custom solutions to assist and implement applications utilizing Bar Coding, Radio Frequency Identification, Warehouse Management Systems, Database Development, Managed Reporting, Customer Relationship Management, Web Development and E-Commerce Applications.

Clients span organizations in Manufacturing, Warehousing, Distribution, Healthcare, and Retail.

### *Need Customized?*

If you need custom modifications, Quest Integrated Solutions is here for you! We understand your needs and the success of business applications. We will work diligently with you to *design and implement solutions for your world.*

### *Other Services:*

- PROJECT CONSULTING
- PROJECT MANAGEMENT
- CUSTOM SOFTWARE DEVELOPMENT
- WIRELESS SITE SURVEYS
- HARDWARE AND SOFTWARE PRE-CONFIGURATION AND TESTING
- INSTALLATION
- ON-GOING MAINTENANCE AND SUPPORT FOR HARDWARE AND SOFTWARE

**For More Information, Please Contact Us!**

**IntelliTrack** Warehouse Management Solution

*Platinum Elite Partner*

Pointe View Professional Park  
4833 Darrow Road Suite 100  
Stow, OH 44224  
P. 330-528-0448  
F. 330-650-0172  
sales@dowlinggroup.com  
www.dcquest.com

