

A SUITE OF DATA COLLECTION APPLICATIONS

### Quest Collect RFID

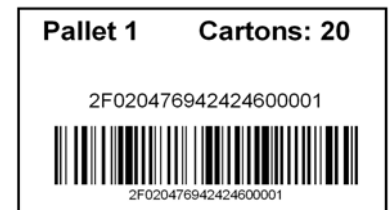
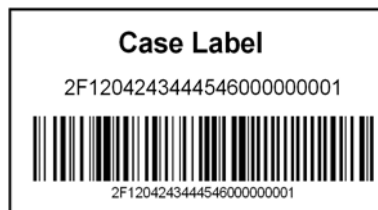


Quest Collect RFID is an application designed for Department of Defense (DoD) suppliers interfacing with the Wide Area Work Flow (WAWF) on-line process. Developed by Quest Integrated Solutions, a division of Dowling Consulting Group, the software reads bar coded and RFID encoded tags merging case and pallet shipping information real-time. These solutions meet the DoD RFID mandate plus provide additional functionality for the supplier. This application is extremely easy to use and maintain.



Designed for small to medium sized suppliers, Quest Collect RFID offers a cost effective solution to meet DoD RFID compliance.

### RFID and Bar Code Labels



**RFID Case and Pallet labels  
Includes both RFID and bar code data**

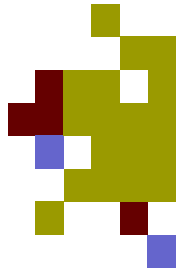


*Quest Collect RFID*

© 2009 Quest Integrated Solutions

Pointe View Professional Park  
4833 Darrow Road Suite 100  
Stow, OH 44224  
P. 330-528-0448  
F. 330-650-0172  
sales@dowlinggroup.com





# Quest

Collect



A SUITE OF DATA COLLECTION APPLICATIONS

## MAIN MENU SCREEN



Quest Collect RFID v1.0  
Tools Help

## Quest Collect RFID

**Shipped Report**

From: Friday , November 14, 2008

To: Friday , November 14, 2008

View Shipped Packets

**Maintenance**

- Setup Operation Parameters
- Download Contract Data to HandHeld
- Upload Packet Data from HandHeld
- View / Release Pending Packets
- Exit Quest Collect RFID

Welcome to Quest Collect RFID powered by DCG

Quest Collect RFID

© 2009 Quest Integrated Solutions

Pointe View Professional Park  
4833 Darrow Road Suite 100  
Stow, OH 44224  
P. 330-528-0448  
F. 330-650-0172  
sales@dowlinggroup.com

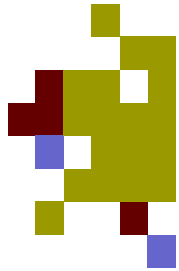


Solutions for your world.

# Quest

Integrated Solutions

A Division of Dowling Consulting Group



# Quest

Collect



A SUITE OF DATA COLLECTION APPLICATIONS

## MAIN MENU SCREEN



Select Setup Operation Parameters to input RFID Contract information

## SET UP SCREEN



WAWF Contract Information section allows user to manually load and update Active Contract data into Quest Collect RFID

Multiple Contract Numbers can be viewed through the drop-down list

Application Paths and WAWF FTP Settings contain information for data transfers to the WAWF site

Typically these do not need to be changed once they are set

Quest Collect RFID

© 2009 Quest Integrated Solutions

Pointe View Professional Park  
4833 Darrow Road Suite 100  
Stow, OH 44224  
P. 330-528-0448  
F. 330-650-0172  
sales@dowlinggroup.com

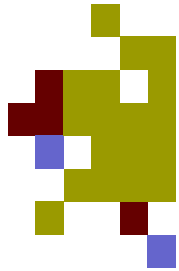


# Quest

Integrated Solutions

Solutions for your world.

A Division of Dowling Consulting Group



# Quest

Collect



A SUITE OF DATA COLLECTION APPLICATIONS

## MAIN MENU SCREEN



To download Contract information to handheld, select:

Download Contract Data to Handheld button

## DOWNLOAD TO HANDHELD

After contracts are downloaded to the handheld, a Verification Message appears



Quest Collect RFID

© 2009 Quest Integrated Solutions

Pointe View Professional Park  
4833 Darrow Road Suite 100  
Stow, OH 44224  
P. 330-528-0448  
F. 330-650-0172  
sales@dowlinggroup.com

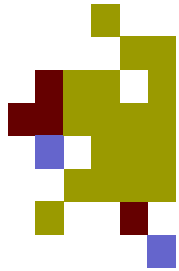


Solutions for your world.

# Quest

Integrated Solutions

A Division of Dowling Consulting Group



A SUITE OF DATA COLLECTION APPLICATIONS

**HANDHELD PROGRAM**

To start handheld program, double-click the Quest Collect RFID icon on the handheld terminal's main screen



**Quest Collect RFID**

Contract:

Delivery:

Line/Qty:

Case Tag:

Quest C... 3:48 PM



Contract and Delivery information are downloaded from PC module

User selects from drop-down boxes

Input to other data fields can come from handheld keyboard, or bar codes if available

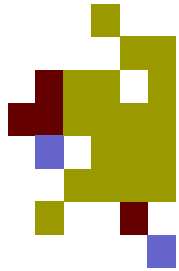
Once Contract, Delivery, and Line/Qty fields are filled in, system is ready to scan Case Tags

*Quest Collect RFID*

© 2009 Quest Integrated Solutions

Pointe View Professional Park  
4833 Darrow Road Suite 100  
Stow, OH 44224  
P. 330-528-0448  
F. 330-650-0172  
sales@dowlinggroup.com





# Quest

Collect



A SUITE OF DATA COLLECTION APPLICATIONS

## HANDHELD PROGRAM



Scan bar code Case Tag label  
Continue scanning until all Case Tags on pallet are scanned



Scan Case Tag bar code

**Quest Collect RFID**

Contract: CONTRACT\_1234  
 Delivery: DEL1  
 Line/Qty: 0001AB | 150  
 Case Tag: 31323334350000000004

03	000000003		0001AB		150
02	000000002		0001AB		150
01	000000001		0001AB		150

Complete Pallet    Verify    Exit

Quest C... 3:55 PM

A list of scanned Case Tags will appear in this window

After all Case Tags are scanned onto pallet, press Complete Pallet button to associate all Case Tags to a specific Pallet Tag

Scan Pallet Tag label



**Quest Collect RFID**

Contract: CONTRACT\_1234  
 Delivery: DEL1  
 Line/Qty:    |     
 Case Tag:     
 Pallet Tag: 03132333435000000001

04	000000004		0001AB		150
03	000000003		0001AB		150
02	000000002		0001AB		150
01	000000001		0001AB		150

Complete Pallet    Verify    Exit

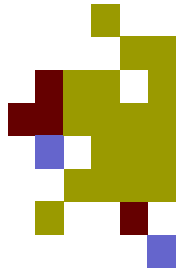
Quest C... 4:03 PM

Quest Collect RFID

© 2009 Quest Integrated Solutions

Pointe View Professional Park  
4833 Darrow Road Suite 100  
Stow, OH 44224  
P. 330-528-0448  
F. 330-650-0172  
sales@dowlinggroup.com



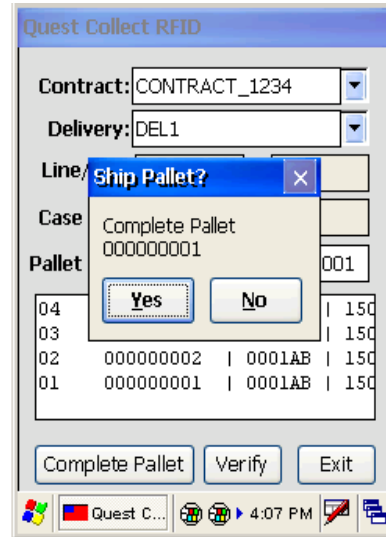


A SUITE OF DATA COLLECTION APPLICATIONS

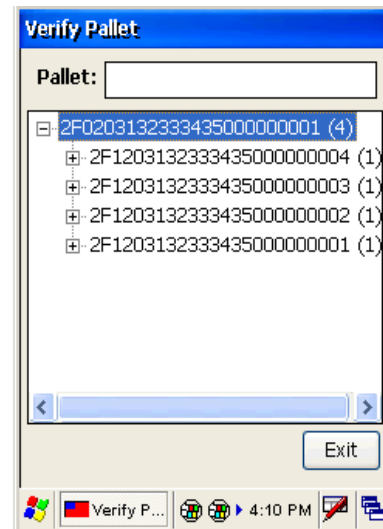
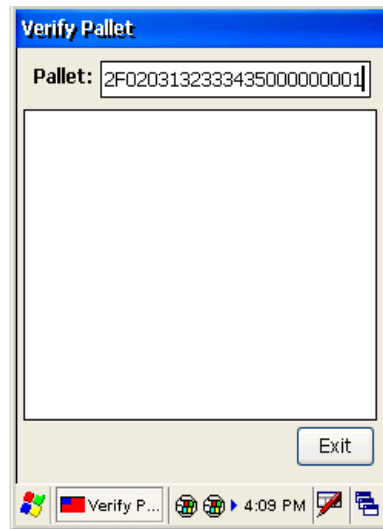
**HANDHELD PROGRAM**



To complete pallet, select the Yes button.  
All scanned Case Tags are now associated with this RFID Pallet Tag.



Select Verify button to view all Case Tags, Line Numbers, and Quantities associated with Pallet Tag

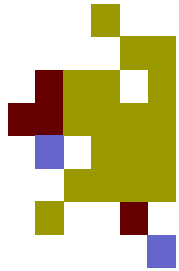


Quest Collect RFID

© 2009 Quest Integrated Solutions

Pointe View Professional Park  
4833 Darrow Road Suite 100  
Stow, OH 44224  
P. 330-528-0448  
F. 330-650-0172  
sales@dowlinggroup.com





# Quest

Collect



A SUITE OF DATA COLLECTION APPLICATIONS

## MAIN MENU SCREEN



To upload data from the handheld, select Upload Packet Data from Handheld

## UPLOAD FROM HANDHELD

After data is uploaded from the handheld, a Success Message appears



Quest Collect RFID

© 2009 Quest Integrated Solutions

Pointe View Professional Park  
4833 Darrow Road Suite 100  
Stow, OH 44224  
P. 330-528-0448  
F. 330-650-0172  
sales@dowlinggroup.com

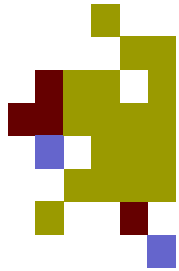


Solutions for your world.

# Quest

Integrated Solutions

A Division of Dowling Consulting Group



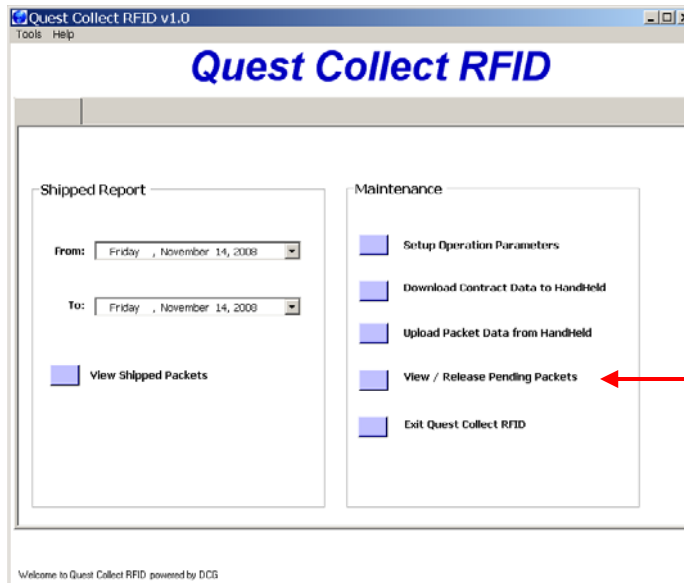
# Quest

Collect



A SUITE OF DATA COLLECTION APPLICATIONS

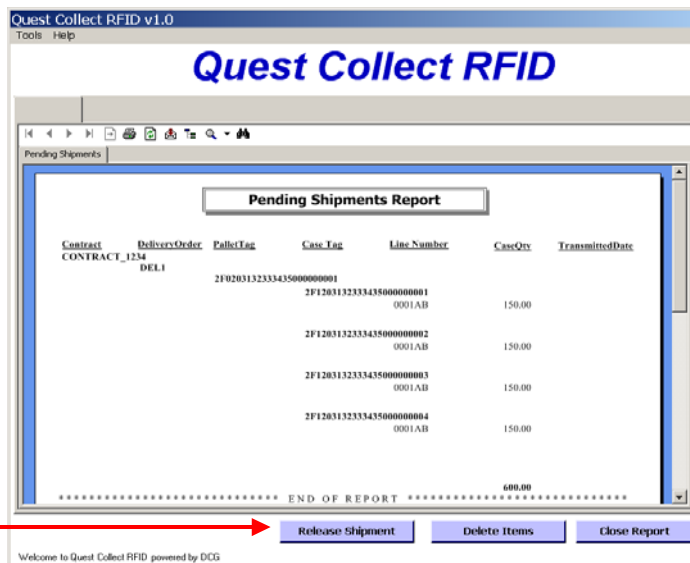
## MAIN MENU SCREEN



Select View / Release Pending Packets to view data uploaded from the handheld and to release the shipment information to WAWF

Report shows Pending Shipments data uploaded from the handheld.

Select Release Shipment button to send data to WAWF



## PENDING SHIPMENT SCREEN



Quest Collect RFID

© 2009 Quest Integrated Solutions

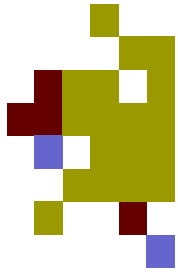
Pointe View Professional Park  
4833 Darrow Road Suite 100  
Stow, OH 44224  
P. 330-528-0448  
F. 330-650-0172  
sales@dowlinggroup.com



# Quest

Integrated Solutions  
A Division of Dowling Consulting Group

Solutions for your world.



# Quest

Collect



A SUITE OF DATA COLLECTION APPLICATIONS

Highlight individual tags or press Select All to ship desired items

Quest Collect RFID v1.0  
Tools Help

## Quest Collect RFID

(4) Select records to be Released for Shipment

ScanDate	Contract	DeliveryOrder	PalletTag	CaseTag	Line	Qty	Uploaded
11/13/2008	CONTRACT_1234	DEL1	2F0203132333435000000001	2F1203132333435000000004	0001AB	150	<input type="checkbox"/>
11/13/2008	CONTRACT_1234	DEL1	2F0203132333435000000001	2F1203132333435000000003	0001AB	150	<input type="checkbox"/>
11/13/2008	CONTRACT_1234	DEL1	2F0203132333435000000001	2F1203132333435000000002	0001AB	150	<input type="checkbox"/>
11/13/2008	CONTRACT_1234	DEL1	2F0203132333435000000001	2F1203132333435000000001	0001AB	150	<input type="checkbox"/>

Release Shipment    Select All    Close Data

Welcome to Quest Collect RFID powered by DCG

## RELEASE SHIPMENTS SCREENS



To release shipment select Release Shipment button.

Input WAWF FTP Parameters for shipment release and select Complete

Quest Collect RFID v1.0  
Tools Help

## Quest Collect RFID

(4) Select records to be Released for Shipment

ScanDate	Contract	DeliveryOrder	PalletTag	CaseTag	Line	Qty	Uploaded
11/13/2008	CONTRACT_1234	DEL1	2F0203132333435000000001	2F1203132333435000000004	0001AB	150	<input checked="" type="checkbox"/>
11/13/2008	CONTRACT_1234	DEL1	2F0203132333435000000001	2F1203132333435000000003	0001AB	150	<input checked="" type="checkbox"/>
11/13/2008	CONTRACT_1234	DEL1	2F0203132333435000000001	2F1203132333435000000002	0001AB	150	<input checked="" type="checkbox"/>
11/13/2008	CONTRACT_1234	DEL1	2F0203132333435000000001	2F1203132333435000000001	0001AB	150	<input checked="" type="checkbox"/>

WAWF Parameters

User ID: Quest    Trans: 1

Ship#: 301

Select a date to override the Estimated Delivery Date entered in the document submission.

Est. Delivery Date: 11/13/2008

Complete    Cancel

Release Shipment    Select All    Close Data

[Release Shipment] Releases all selected records in one FTP shipment file.

Quest Collect RFID

© 2009 Quest Integrated Solutions

Pointe View Professional Park  
4833 Darrow Road Suite 100  
Stow, OH 44224  
P. 330-528-0448  
F. 330-650-0172  
sales@dowlinggroup.com

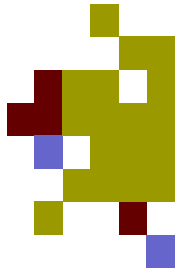


# Quest

Integrated Solutions

Solutions for your world.

A Division of Dowling Consulting Group



# Quest

Collect



A SUITE OF DATA COLLECTION APPLICATIONS

To confirm release shipment select Yes



Quest Collect RFID v1.0  
Tools Help

## Quest Collect RFID

(1) Select records to be Released for Shipment

ScanDate	Contract	DeliveryOrder	PalletTag	CaseTag	Line	Qty	Uploaded
11/13/2008	CONTRACT_1234	DEL1	2F0203132233435000000001	2F1203132233435000000004	0001AB	150	<input type="checkbox"/>
11/13/2008	CONTRACT_1234	DEL1	2F0203132233435000000001	2F1203132233435000000002	0001AB	150	<input type="checkbox"/>
11/13/2008	CONTRACT_1234	DEL1	2F0203132233435000000001	2F1203132233435000000002	0001AB	150	<input type="checkbox"/>
11/13/2008	CONTRACT_1234	DEL1	2F0203132233435000000001	2F1203132233435000000001	0001AB	150	<input type="checkbox"/>

Release Shipment? [x]

Release shipment of 4 cases?

Yes No

[Release Shipment] Releases all selected records in one FTP shipment file.

**RELEASE SHIPMENT SCREEN**



Items Shipped Report will open

Quest Collect RFID v1.0  
Tools Help

## Quest Collect RFID

Items Shipped

**Items Shipped Report**

From: 11/13/2008  
To: 11/13/2008

Contract	DeliveryOrder	PalletTag	CaseTag	Line Nbr	CaseQty	TransmittedDate
CONTRACT_1234	DEL1	2F0203132233435000000001	2F1203132233435000000001	0001AB	150.00	11/13/2008 4:26:1
			2F1203132233435000000002	0001AB	150.00	11/13/2008 4:26:1
			2F1203132233435000000003	0001AB	150.00	11/13/2008 4:26:1
			2F1203132233435000000004	0001AB	150.00	11/13/2008 4:26:1
					600.00	
					600.00	

\*\*\*\*\* END OF REPORT \*\*\*\*\*

[Release Shipment] Releases all selected records in one FTP shipment file.

**ITEMS SHIPPED REPORT SCREEN**



Quest Collect RFID

© 2009 Quest Integrated Solutions

Pointe View Professional Park  
4833 Darrow Road Suite 100  
Stow, OH 44224  
P. 330-528-0448  
F. 330-650-0172  
sales@dowlinggroup.com

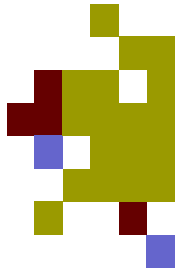


# Quest

Integrated Solutions

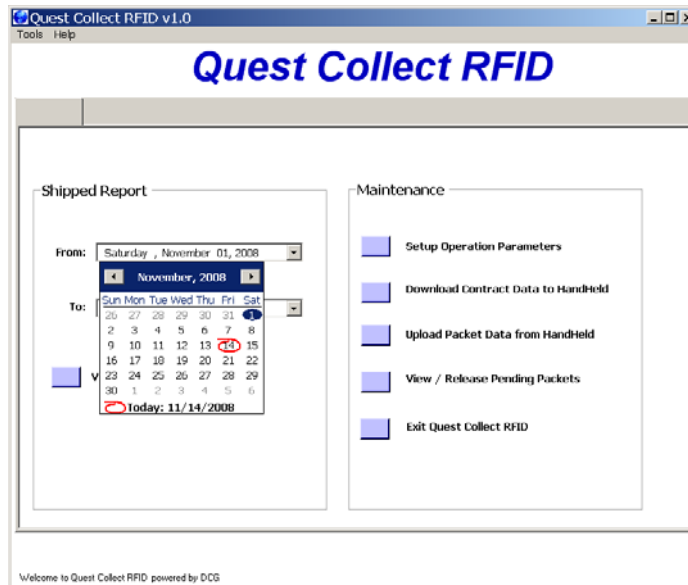
A Division of Dowling Consulting Group

Solutions for your world.



A SUITE OF DATA COLLECTION APPLICATIONS

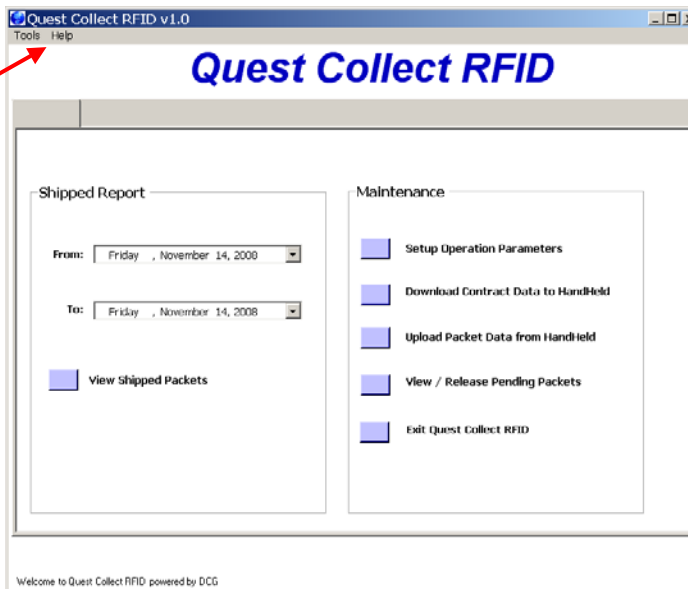
To view previous Shipped information use From: / To: calendar to select a date range, then select View Shipped Packets to view the Shipped Report



MAIN MENU SCREEN



Select Tool Tab from Main Menu to backup the Quest Collect RFID database



Select Help Tab from Main Menu to view the Quest Collect RFID user's manual

TOOLS / HELP SCREEN



Quest Collect RFID

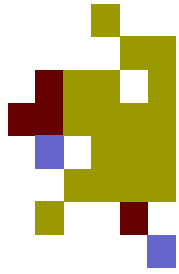
© 2009 Quest Integrated Solutions

Pointe View Professional Park  
4833 Darrow Road Suite 100  
Stow, OH 44224  
P. 330-528-0448  
F. 330-650-0172  
sales@dowlinggroup.com



Quest  
Integrated Solutions  
A Division of Dowling Consulting Group

Solutions for your world.



**Quest**  
Collect



A SUITE OF DATA COLLECTION APPLICATIONS

**Quest Integrated Solutions**, a division of Dowling Consulting Group, specializes in Wireless Networks and Automated Data Collection Systems.

Since 1991, Quest has provided integration skills and custom solutions to assist and implement applications utilizing Bar Coding, Radio Frequency Identification, Warehouse Management Systems, Database Development, Managed Reporting, Customer Relationship Management, Web Development and E-Commerce Applications.

Clients span organizations in Manufacturing, Warehousing, Distribution, Healthcare, and Retail.

## *Need Customized?*

If you need a modification to any module, Quest Integrated Solutions is here for you! We understand your needs and the success of business applications. We will work diligently with you to *design and implement solutions for your world*. If you need to create your own module, we are here for you.

## *Other Services:*

- PROJECT CONSULTING
- PROJECT MANAGEMENT
- CUSTOM SOFTWARE DEVELOPMENT
- WIRELESS SITE SURVEYS
- HARDWARE AND SOFTWARE PRE-CONFIGURATION AND TESTING
- INSTALLATION
- ON-GOING MAINTENANCE AND SUPPORT FOR HARDWARE AND SOFTWARE

**Don't settle for anything less! - give us a call.**

*Quest Collect RFID*

© 2009 Quest Integrated Solutions

Pointe View Professional Park  
4833 Darrow Road Suite 100  
Stow, OH 44224  
P. 330-528-0448  
F. 330-650-0172  
sales@dowlinggroup.com

